



eTRAC

By Tracsis

Transforming how the industry visualises and manages data

Geospatial, digital mapping platform

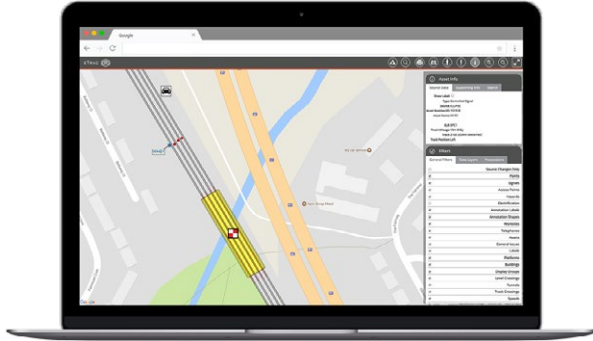
Email info@railcomm.com or phone +1 585-377-3360



RAILCOMM

Automated Rail Solutions

Bespoke digital mapping



eTrac is a bespoke digital mapping platform that uses geospatial data to generate schematic diagrams on demand, transforming the way the industry visualises and manages data. It provides real-world visibility of assets layered over Google Maps using data from multiple sources, such as Ellipse, CARRS, Track Centre Line, OPAS and the National Hazard Directory, to generate these geomatics.

The product also has the additional advantage of being able to personalise schematics by adding local information, such as the position of the work-site, occupational risks, and general safety instructions.

eTrac isn't your standard off-the-shelf product; it is built and adapted to suit your exact needs.

The main benefits of implementing eTrac are the increases in site performance and safety. The current method is unfit for purpose; multiple sets of diagrams are often not cross-referenced, with key information left unlinked, such as the point of access and direction of trains. This leads to confusion on site and often results in near misses, accidents, or even fatalities. Having a single diagram that is generated from rail industry data eliminates this confusion, providing a single source truth.

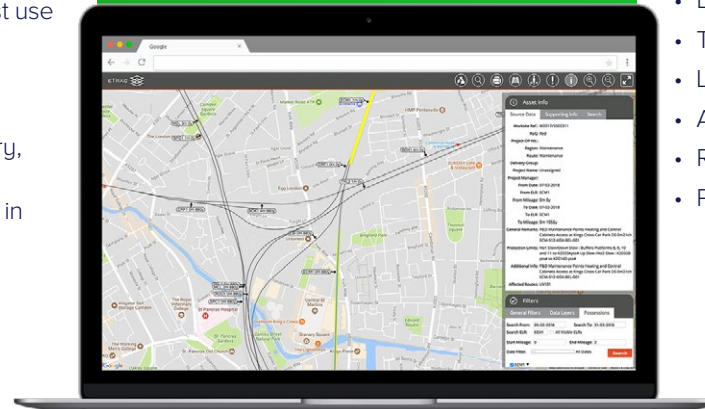
Planning is made more efficient and accurate, by instantly providing planners with the information they need to ensure they are making the best use of the assets available to them.

eTrac also enables site-based staff to easily capture and report data quality issues, with annotatable digital diagrams, an image library, and video function. These can be aligned to existing assets to further portray an issue, all in real-time.

View, annotate,
share and
update
safety critical
information

Built initially for the UK railways, the diagrams include all of the information required by planners, persons in charge, and other railway personnel to plan and deliver work on the railways, including:

- Track layout
- Speed/direction of trains
- Signals
- Points
- Junctions
- Stations
- Bridges
- Tunnels
- Level crossings
- Access points
- Restricted clearances
- Prohibitions



Software-based rail automation solutions

Talk to our team to discuss your project or for a demonstration of our capabilities



+1 585-377-3360



info@railcomm.com



1387 Fairport Rd Building 900,
Fairport, NY 14450 USA

